



# ***lightning***

**A SCREEN MAGNIFICATION  
SOFTWARE PACKAGE**

## **USER MANUAL**

**© Sensory Software 2007**

# Contents

<b>Contents .....</b>	<b>1</b>
<b>1. About Lightning .....</b>	<b>2</b>
<b>2. System Requirements.....</b>	<b>2</b>
<b>3. Installing and Running Lightning .....</b>	<b>3</b>
<b>4. The Lightning Toolbar.....</b>	<b>4</b>
<b>5. Changing the Level of Magnification .....</b>	<b>5</b>
<b>6. Smoothing Text .....</b>	<b>6</b>
<b>7. Colour Inversion .....</b>	<b>6</b>
<b>8. Changing the Shape and Size of Letters.....</b>	<b>7</b>
<b>9. Centring the Cursor .....</b>	<b>8</b>
<b>10. Lightning Magnification Lens Options .....</b>	<b>9</b>
<b>11. Configuring Cursor Style .....</b>	<b>11</b>
<b>12. Using Magnification with Speech Output .....</b>	<b>12</b>
<b>13. Exiting Lightning .....</b>	<b>12</b>
<b>14. Microsoft Program Accessibility .....</b>	<b>12</b>

# **1. About Lightning**

**Lightning is a magnification software package for the PC. Whatever appears on the computer screen can be magnified up to 32 times and it works well with most Windows applications and video clips. It is easy to install and just as easy to use.**

## **2. System Requirements**

- **Windows 2000, XP or Vista**
- **233MHz processor**
- **128MB RAM**
- **4MB free disk space**

### **3. Installing and Running Lightning**

*Lightning does not appear to clash with other disability access software.*

#### **Installing from Download**

To download lightning:

- 1. Activate the download link**
- 2. Click OK at the security screen**
- 3. Save the installation file to your hard disk**
- 4. Once downloaded, run the file and follow the on screen instructions.**

#### **Installing from CD**

Lightning can also be loaded from a CD. To install:

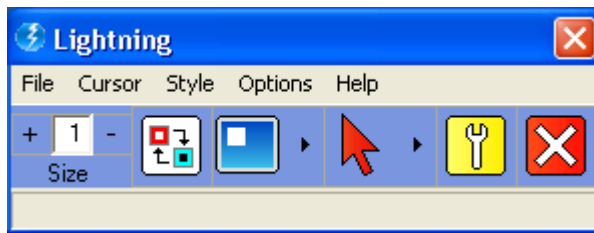
- 1. Place the Lightning CD in the CD drive**
- 2. The installation should begin automatically, follow the on screen instructions**

#### **Running Lightning**

Lightning will run automatically when you start your PC. If you do not want this to happen select Start → All Programs → Startup, right click on "Sensory Lightning Magnifier" and select Delete.

To run Lightning, either double click on the icon on the desktop or click on Start and select All Programs → Sensory → Lightning Magnifier. A dialog box will appear in the top left corner of the screen offering various options.

## 4. The Lightning Toolbar



The Lightning toolbar is used to execute the following functions:

- Changing the Level of Magnification (Section 5)
- Smoothing Text (Section 6)
- Colour Inversion (Section 7)
- Changing the Shape and Size of Letters (Section 8)
- Centring the Cursor (Section 9)
- Configuring the area of magnification (Section 10)
- Configuring cursor style (Section 11)

The toolbar initially appears in the left-hand top corner of the screen. When you open an application such as Microsoft Word or Internet Explorer, Lightning will still be running even though the dialog box is hidden. If you want to get back to the dialog box to make changes, right click on Lightning at the bottom of the screen in the taskbar or hold down the ALT key and keep pressing the TAB key until the Lightning dialog box appears again or hold down CTRL and press \* on the number pad. Lightning can be controlled using your computer mouse or using the keyboard keys to navigate the file menu at the top of the Lightning toolbar.

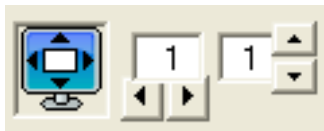
## 5. Changing the Level of Magnification

On the toolbar there is a button to change the level of magnification.



To change the level of magnification until you find the size that suits you best, click on the plus (+) or minus (-) button.

If the X=Y box is checked, the two numbers will always be the same. This can be found by clicking the settings icon on the Lightning toolbar. The X=Y box is ticked as default.



Please read Section 8 on how to make the numbers differ if this is required. Lightning will remember your choice whenever you turn your computer on and you can change size at any time to meet the needs of your current task.

It is possible to increase or decrease your current level of magnification using the keyboard by pressing CTRL and + (plus) or - (minus) on the number keypad.

## 6. Smoothing Text

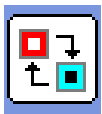
Everything on the screen is made up of square pixels, so when you have large letters or magnified pictures, it may be inconvenient to view rough shapes and edges. The smoothing tool can improve this by smoothing black text.



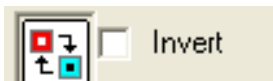
On the Lightning toolbar, click the settings icon. This will open the settings screen. The smoothing box is found in the right hand corner of the settings screen. The box is checked as default.

## 7. Colour Inversion

Some people prefer to look at light letters against a dark background rather than dark letters against a light background. To do this, click on the invert icon on the toolbar. This will invert the colour scheme.



When you next click on the Invert box, the colours will revert to what they were originally. The invert function is also accessible from within the Lightning settings screen. Using the keyboard to drive Lightning, the shortcut key is Ctrl / on the keypad.



**Within the Microsoft Windows Operating System, it is possible to change colour schemes, font styles and sizes. Section 14 gives advice on how to get the most out of your Microsoft products.**

## **8. Changing the Shape and Size of Letters**

**It is possible to change the shape and size of letters or pictures. To do this, click on the settings icon on the toolbar and uncheck the X=Y box on the left hand side of the Lightning settings screen by clicking on it.**

**When the box is unchecked it will allow you to change the level of X and Y independently. If you only increase X, letters and pictures will grow in size horizontally but not vertically. If you only increase Y, letters and pictures will grow in size vertically but remain the same horizontally. Clicking on the X=Y button again will reset the size when you want the letters or pictures to return to their normal symmetrical shape.**

## 9. Centring the Cursor

**If you wish to centre the cursor in the magnified area, open the Lightning settings screen by clicking the settings icon on the Lightning toolbar. Once open, check the Centre Cursor check box on the bottom right hand corner of the Lightning settings screen.**



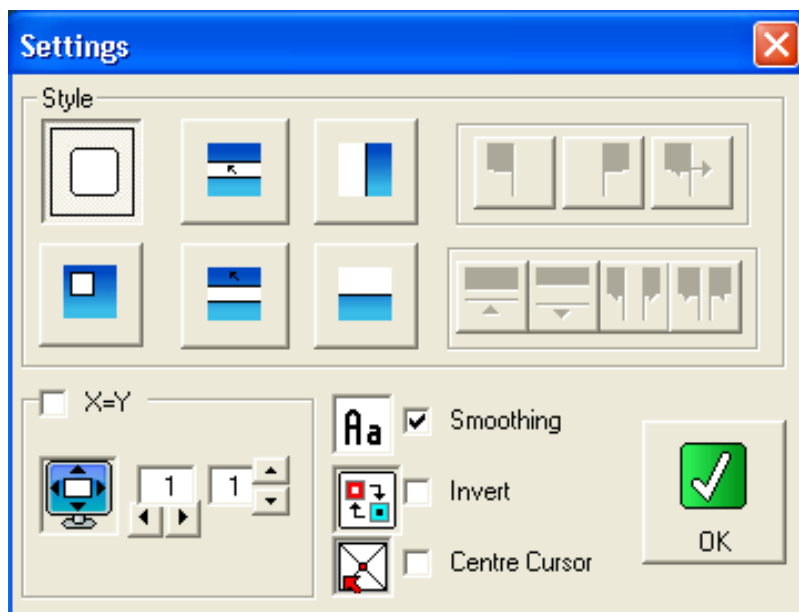
Centre Cursor



Centre Cursor

## 10. Lightning Magnification Lens Options

The Lens Option features can be found within Lightning settings, by clicking on the settings icon on the Lightning toolbar. The Lens Options show the different lens options available, which allow you to alter the magnification area.



### 10.1 Four Lens Adjustment Buttons



There are four buttons along the top of this extension which affect the size and shape of the lens which can be used in any magnification mode apart from full screen. You can experiment with these to suit your purpose. If, for example, you click on the left-hand button, you can extend the lens vertically

and this could be useful when studying a particular column of figures.

## **10.2 Six Magnification Modes**



### **Full Screen Magnification**

This is the default and most widely used option. This magnifies the entire screen.



### **The Magnifying Lens**

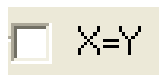
This is the top left hand button. When you click on it, the mouse pointer becomes a small, square magnifying lens. As you drive the mouse pointer round the screen, you see in detail a small area surrounding the pointer. The rest of the screen is not magnified.



### **The Strip Magnifier with normal sized pointer**

When you click on this strip magnifier option, you create a horizontal magnifying strip which moves about the screen as you drive the mouse pointer.

Some users have found that in strip magnifier mode it is useful to increase the height of letters slightly but not the width. To do this, un-tick the X=Y choice on the Lightning settings screen and set the Y size to be one size higher than the X size.



## The Strip Magnifier without normal sized pointer



As above but it does not show the normal sized pointer. The mouse pointer appears only within the strip and is magnified, ideal for reading text line by line.

## Vertical and horizontal split screens



There are occasions when it is useful to see half the screen at normal size and the other half at your chosen magnified size for detailed work.



Clicking on one of the two options enables such split screen choices. Once selected, three more options appear to the right.

These allow you to magnify in either half of the screen (top/bottom or left/right) and auto-move the magnification so the correct side of the screen is magnified in relation to where the mouse pointer is.



## 11. Configuring Cursor Style



It is possible to change the colour of the mouse cursor if the default red is not suitable for you. To do this, click the button that has a white cursor on it. A number of colour options will appear, select the one most appropriate for you and the cursor colour will be changed.

## **12. Using Magnification with Speech Output**

**Lightning is purely a magnification program and there is no speech output facility.**

## **13. Exiting Lightning**

**To exit Lightning, click on the Close symbol  on the Lightning toolbar. Magnification will now cease.**

## **14. Microsoft Program Accessibility**

**Microsoft provide accessibility information and tips on all of their products, so to get the most out of your PC, visit their website: [www.microsoft.com/enable](http://www.microsoft.com/enable).**

**Good luck with Lightning, your new magnifier software.**

**Doc. Ref. 11<sup>th</sup> July 2007**