



***lightning***

**PLUS**

**A SCREEN MAGNIFICATION AND SCREEN READER  
SOFTWARE PACKAGE**

**USER MANUAL**

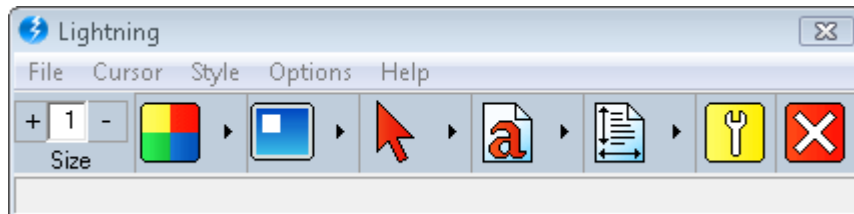
© Sensory Software 2008

# Contents

Introduction .....	3
Mouse or Keyboard .....	3
The Lightning PLUS Toolbar .....	4
Changing the Level of Magnification .....	5
Changing the Colour Scheme .....	5
Changing the Magnification Lens .....	6
Configuring the Cursor Colour .....	7
Altering the Font .....	7
Altering the Spacing .....	7
Lightning PLUS Settings .....	7
Lightning PLUS Settings- Settings .....	8
Lightning PLUS Settings- Colour .....	11
Lightning PLUS Settings- Locators .....	13
Exiting Lightning PLUS .....	15
Lightning Pad .....	15
Using Magnification with Speech Output .....	16
Microsoft Program Accessibility .....	16
Support & Contact .....	16

# Introduction

Lightning PLUS is a magnification software package for the modern PC. Whatever appears on the computer screen can be magnified up to 36 times and it works well with most Windows applications and video clips can also be magnified. It is easy to install and just as easy to use.



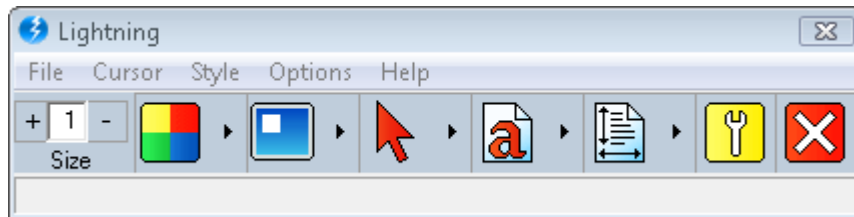
## Mouse or Keyboard

Throughout this helpfile, we refer to clicking the mouse. When the mouse pointer is on a word or object, clicking the left mouse button once will highlight and double-clicking the left button will activate it.









### Using the Keyboard

Lightning PLUS is mainly designed for mouse use but it is possible to quickly increase or decrease your current level of magnification by holding down the CTRL key with your left hand and pressing + or - (plus or minus) with your right hand on the keypad.

# The Lightning PLUS Toolbar



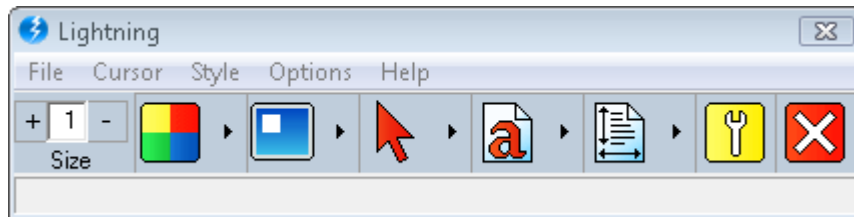
The Lightning PLUS toolbar has the following buttons:

-  [Level of Magnification](#)
-  [Colour Scheme](#)
-  [Magnification Lens](#)
-  [Cursor Colour](#)
-  [Change the Font](#)
-  [Change the Spacing](#)
-  [Settings](#)
-  [Exit](#)

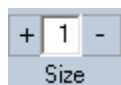
The toolbar normally appears on the left-hand top corner of the desktop screen. When you open an application such as Microsoft Word or Internet Explorer, Lightning PLUS is still working although the toolbar is hidden. If you want to get back to the toolbar to make changes, left click on Lightning PLUS at the bottom of the screen in the taskbar or hold down the ALT key and keep pressing the TAB key until the Lightning PLUS toolbar appears again.

Lightning PLUS can be controlled using your computer mouse or using the keyboard keys to navigate the file menu at the top of the Lightning PLUS toolbar.

# Changing the Level of Magnification



On the toolbar there is a button to change the level of magnification:



To change the level of magnification until you find the size that suits you best, click on the plus (+) or minus (-) button. On the settings screen, if the X=Y box is checked, the two numbers will always be the same. This box can be found by clicking on the settings icon on the Lightning PLUS toolbar. The X=Y box is ticked by default.



Please see the [Lightning PLUS Settings](#) page on how to make the numbers differ if this is required.

Lightning PLUS will remember your choice whenever you turn your computer on and you can change size at any time to meet the needs of your current task.

# Changing the Colour Scheme



Clicking on this button allowing you to alter the colour of your computer screen. You will then be shown a selection of colour schemes you can use to alter the appearance of your computer screen.

# Changing the Magnification Lens



From this button you can choose the lens which is used to magnify the screen. Below are the magnifying modes:

- Full Screen Magnification - This is the default and most widely used option. This magnifies the entire screen.
- The Magnifying Lens - This option uses a square magnifying lens. As you drive the mouse pointer round the screen, you see in detail a small area surrounding the pointer. The rest of the screen is not magnified.
- The Strip Magnifier with normal sized pointer - When you click on this strip magnifier option, you create a horizontal magnifying strip which moves about the screen as you drive the mouse pointer. Some users have found that in strip magnifier mode it is useful to increase the height of letters slightly but not the width. To do this, un-tick the X=Y choice on the Lightning PLUS settings screen. Then set the Y size to be one size higher than the X size.
- The Strip Magnifier without normal sized pointer - As above but it does not show the normal sized pointer. The mouse pointer appears only within the strip and is magnified, ideal for reading text line by line.
- Vertical and horizontal split screens - There are occasions when it is useful to see half the screen at normal size and the other half at your chosen magnified size for detailed work. Clicking on one of the two options enables such split screen choices. Once selected, three more options appear underneath. These allow you to magnify in either half of the screen (top/bottom or left/right) and auto-move the magnification.

## Configuring the Cursor Colour



It is possible to change the colour of the mouse cursor, if the default white is not suitable for you. To do this, click the button that has a red cursor on it. A number of colour options will appear, select the one most appropriate for you and the cursor colour will be changed.

## Altering the Font




Clicking on the Font button gives you options to increase or decrease the font size in Microsoft Word.

## Altering the Spacing



Clicking on the Spacing button gives you options to change the character, line and paragraph spacing in Microsoft Word.

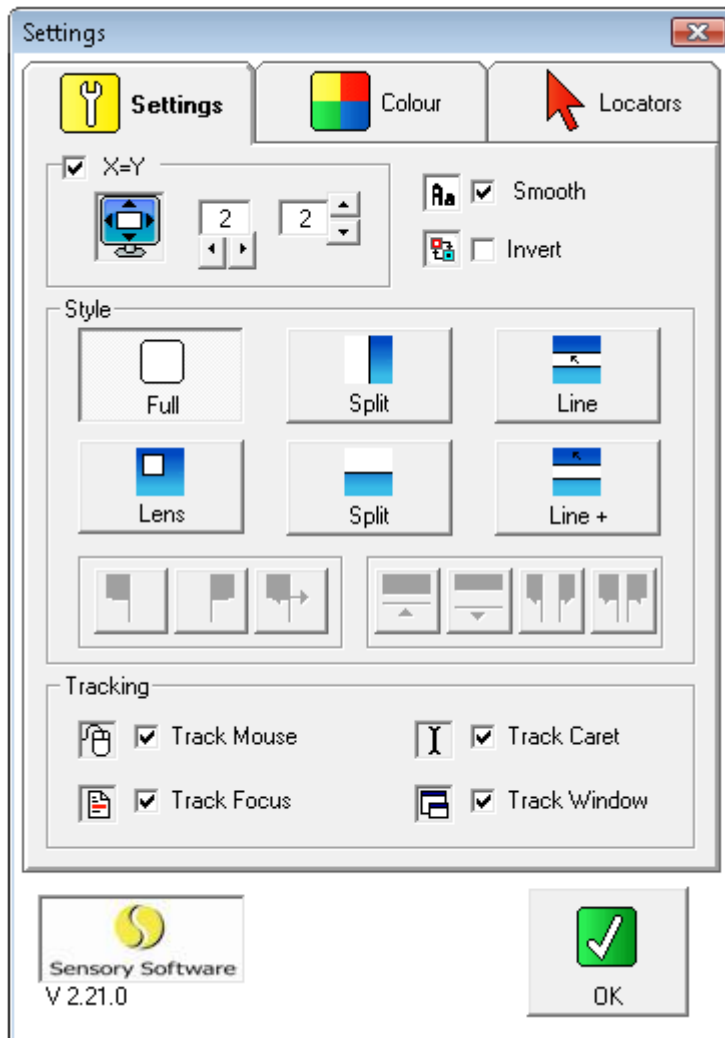
## Lightning PLUS Settings

Lightning PLUS settings can be accessed through the Settings button on the toolbar: 

The Setting screen has three tabs:

- [Settings](#)
- [Colours](#)
- [Locators](#)

# Lightning PLUS Settings - Settings



From this screen you can alter the following:

## Magnification Settings



From this section you can alter the way the screen is magnified. By default X=Y is checked which keeps the magnification equal vertically and horizontally. If you uncheck the X=Y box it will allow you to change the level of X and Y independently. If you only increase X, letters and pictures will grow in size horizontally but not vertically. If you only

increase Y, letters and pictures will grow in size vertically but remain the same horizontally. Clicking on the X = Y button again and then the value will reset the size when you want the letters or pictures to return to their normal symmetrical shape.

## Smoothing and Invert

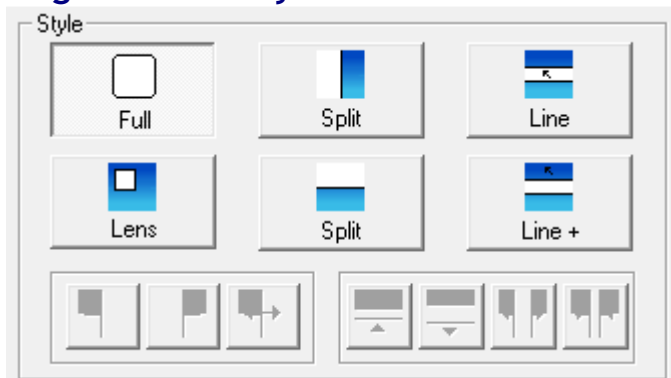


Everything on the screen is made up of square pixels, so when you have large letters or magnified pictures, it may be inconvenient to view rough shapes and edges. The smoothing tool can improve this by smoothing black text.

You can choose to have smoothing on or off at any time by checking the box to get the best results.

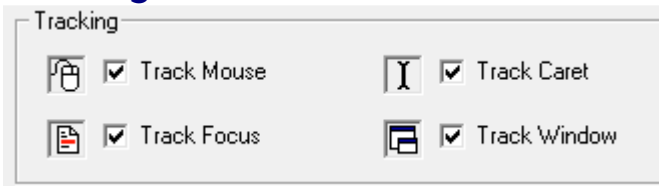
Some people prefer to look at white bright letters against a black background rather than dark letters against a white background. Checking the Invert box will invert the colours on your computer screen.

## Magnification Style



From this section you can alter the way the screen is magnified. See [Magnification Lens](#) page for detail of the magnification modes. You can also adjust the lens: on the bottom line of icons it allows you to increase and decrease the vertical and horizontal height/width and swap which area is magnified.

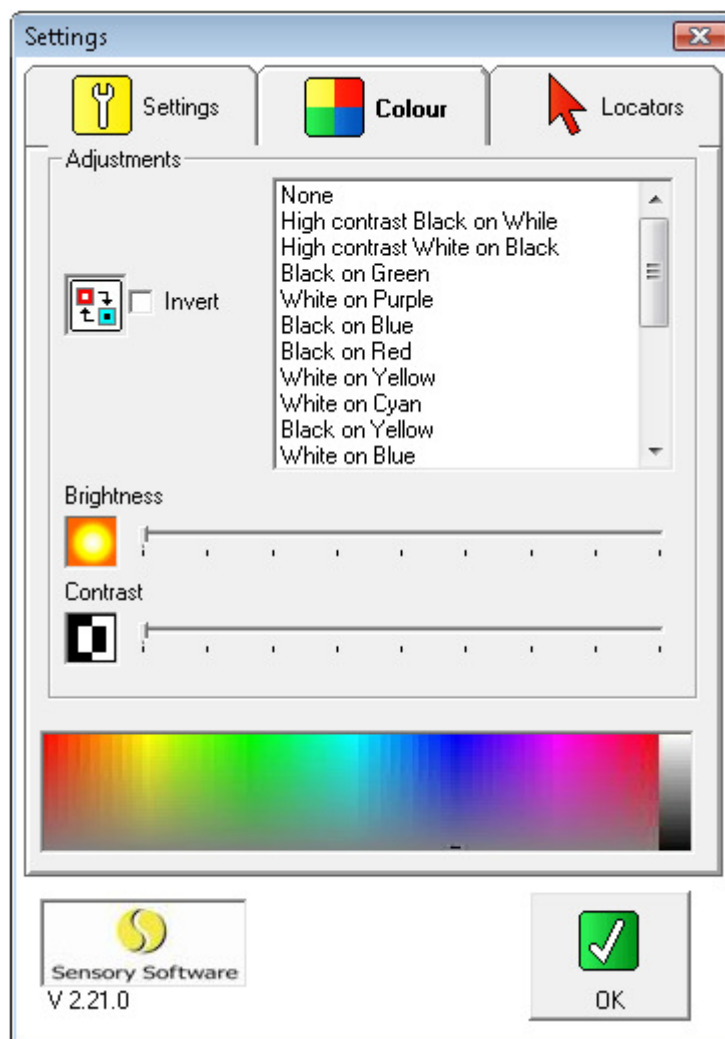
## Tracking



This section allows to you set whether the magnification focus follows the:

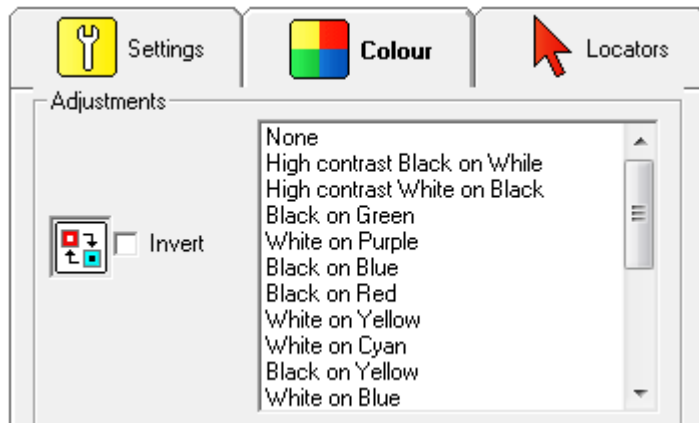
- Mouse - used when moving the mouse
- Caret - used when typing
- Focus - used when the focus is changed, e.g. a popup window or save dialog appears
- Window - used when you change window or alt-tab to another window

# Lightning PLUS Settings - Colour



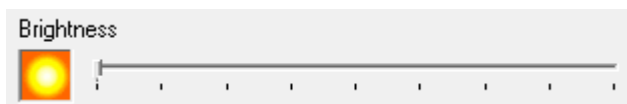
From this screen you can alter the following:

## Invert and Colours



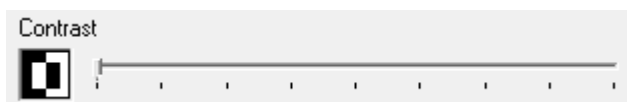
You can change the colour scheme and choose to invert the colours on the screen from this setting.

## Brightness



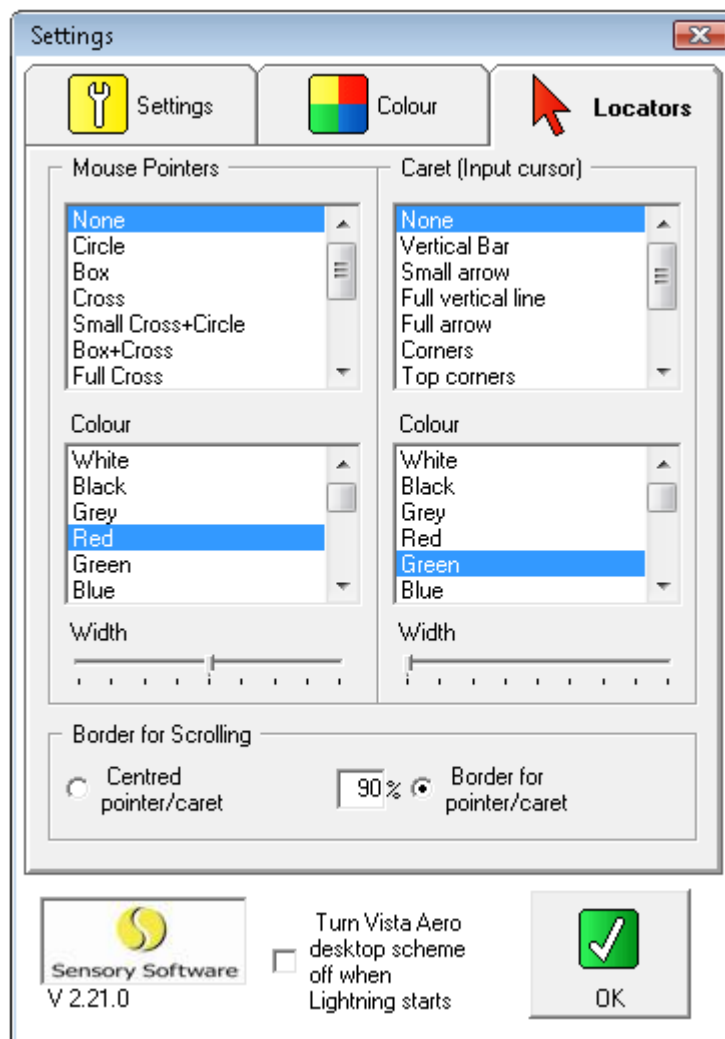
You can alter the brightness of your computer screen using this slider.

## Contrast



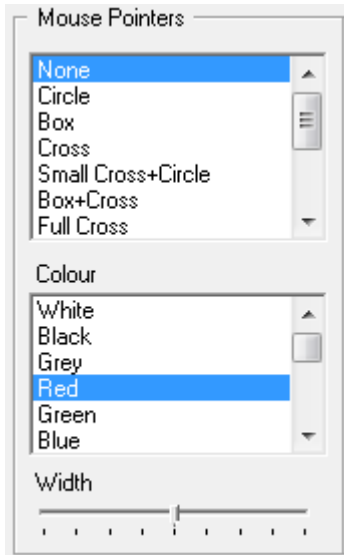
You can alter the contrast of your computer screen using this slider.

# Lightning PLUS Settings - Locators

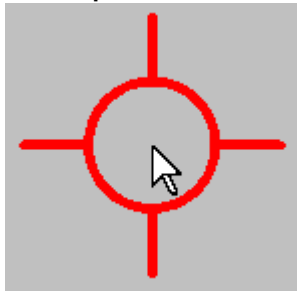


From this screen you can alter the following:

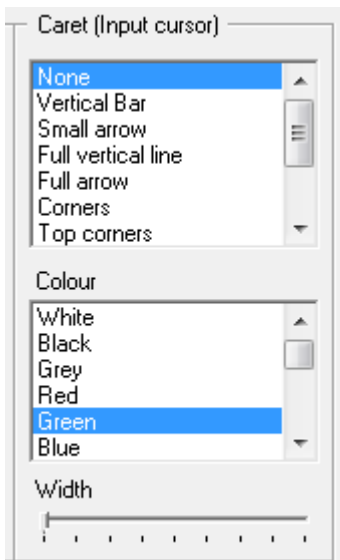
## Mouse Pointer Locators



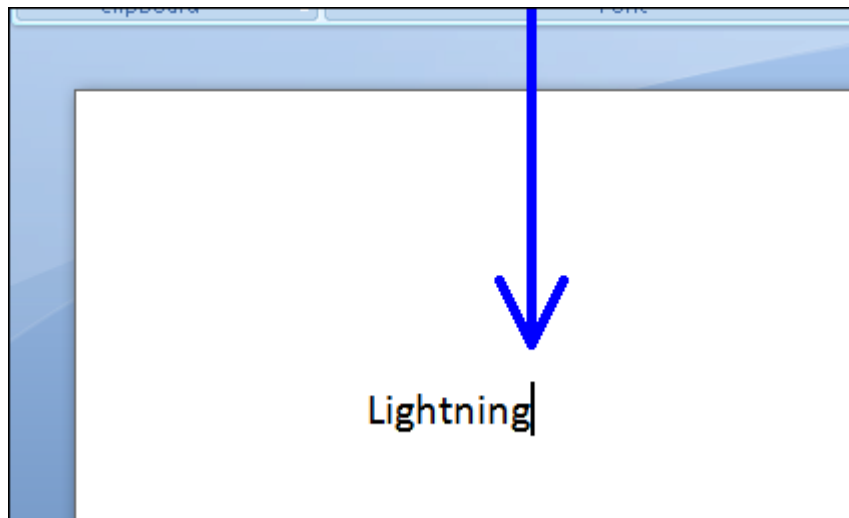
From this section you can choose the way the mouse pointer can be located. This includes the style, width and colour of locator. Below is an example of the "Small cross+circle" locator in red:



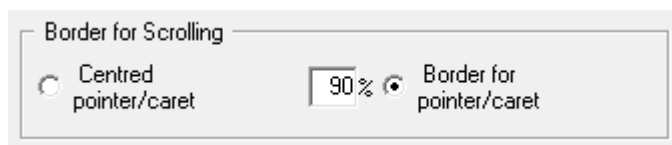
## Caret Locators



From this section you can choose the way the caret can be located when you're typing. This includes the style, width and colour of locator. Below is an example of the "Full Arrow" locator in blue:




### Border for Scrolling



From this section you can choose to centre the cursor in the magnification lens. The border percentage setting sets how far the cursor is allowed to get to the edge of the lens before the lens moves.

## Exiting Lightning PLUS

To exit Lightning PLUS, click on the Close symbol  on the Lightning PLUS toolbar. Magnification will now cease.

## Lightning Pad

Your laptop mousepad usually works like a mouse on the desktop, your movements move the mouse pointer in the direction you indicate, fast or slow. With Lightning Pad your laptop mousepad becomes a positioning device. That means you can put your finger on the top-left of the mousepad and your mouse pointer and the magnification goes to the top

left of the screen. If you go to the bottom right of the mousepad your mouse pointer goes to the Windows system tray. Your mousepad position corresponds directly with what is shown on the screen. This makes it much easier to move around the screen without getting lost.

You must have the Synaptics Mouse Pointer system installed on your laptop: you'll then have a shortcut to Lightning Pad on your desktop and in the Start menu, so just start Lightning Pad to change your mousepad and close Lightning Pad to return it to normal.

## Using Magnification with Speech Output

Lightning PLUS is purely a magnification program and there is no speech output facility.

If you find you would like to have speech as well as magnification then you need another of our software packages such as Thunder, available to download free from [www.screenreader.net](http://www.screenreader.net)

## Microsoft Program Accessibility

Microsoft provide accessibility information and tips on all of their products, so to get the most out of your PC, visit their website: [www.microsoft.com/enable](http://www.microsoft.com/enable)

## Support & Contact

To view more product please visit [www.itzooms.com](http://www.itzooms.com)

If you have any queries, please contact us at [support@clarosoftware.com](mailto:support@clarosoftware.com)