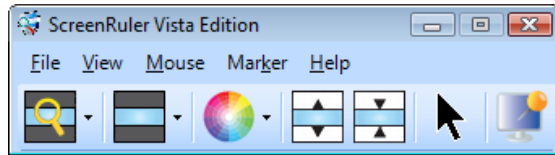


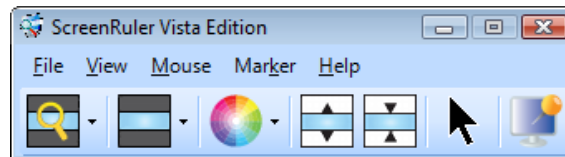
Introduction to ScreenRuler

Thank you for using ScreenRuler (Vista Edition). ScreenRuler is a PC software product to allow part of the PC screen to be highlighted. This will assist you with viewing and concentrating on text. It provides a "strip" across the screen, which can be magnified, can have the contrast changed and have the background darkened out if desired.









ScreenRuler Toolbar

Once you have launched ScreenRuler, it will stay as an open application and will work with all other software. When you are working in a software application, for example Microsoft Word, the ScreenRuler toolbar will sit in the background out of the way. You can also minimise the toolbar and it will continue to work.



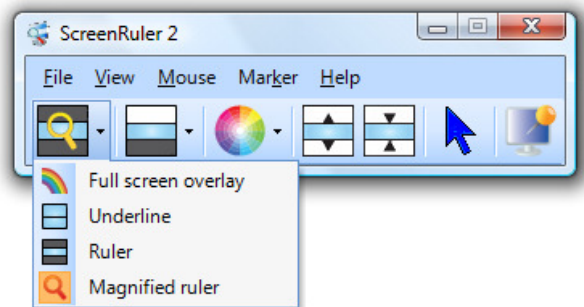
The ScreenRuler toolbar has the following buttons/functions:

-  Select different ruler types.
-  Select which areas outside the ruler are coloured.
-  Choose the colours ScreenRuler should use in the ruler and outside the ruler.
-  Adjust the ruler size.
-  Change the mouse pointer colour.
-  Use screen markers to mark out areas of the screen.

All of the above buttons and more options are also accessible via the menu bar at the top.

Ruler Types

This button allows you to select which type of ruler to use.



There are four types of ruler:

Full screen overlay (no ruler)



In this mode, no ruler is used. Instead, a full screen overlay colour is used to tint the screen.

Underline



In this mode, a small black line is displayed horizontally across the screen. This line will follow the mouse pointer and text input depending which one is in use.

Ruler



In this mode, a 'ruler' will appear horizontally across the screen. You can change settings such as the colour of the ruler, which areas are coloured outside the ruler, what colour to use outside of the ruler and the size of the ruler from other buttons on the toolbar.

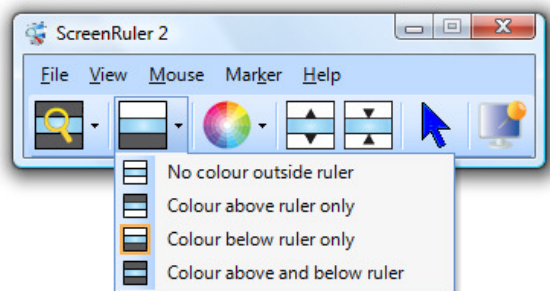
Magnified Ruler



This mode is the same as the Ruler mode above but the contents of the ruler are magnified by 2x in height.

Coloured Areas

This button allows you to choose which areas are colour outside of the ruler.



In underline, ruler and magnified ruler mode there are four options:

No colour outside the ruler



This option switches off any colouring outside of the ruler area.

Colour above the ruler only



This option colours the area above the ruler only.

Colour below the ruler only



This option colours the area below the ruler only.

Colour above and below the ruler



This option colours both the areas above and below the ruler.

In full screen overlay mode there are just two options:

No overlay colour



This option switches off the colour overlay, leaving you with a 'normal' coloured screen.

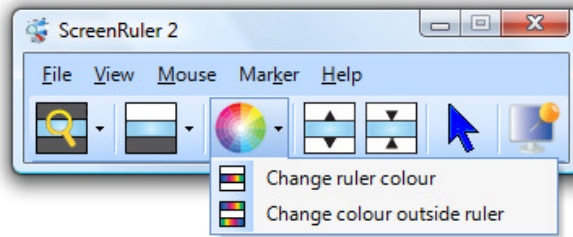
Use overlay colour



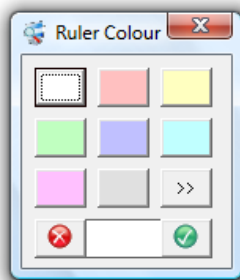
This option switched on the colour overlay and will tint your entire screen.

Colours

This button allows you to change the colours in the ruler and outside the ruler.



Change ruler colour



In the above window, clicking on a coloured button will change the colour of the ruler.

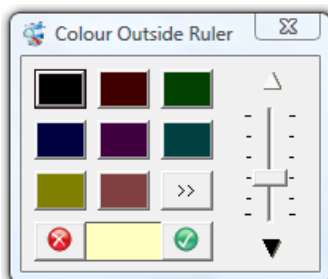
Click on the >> button to choose from more colours.

Click on the tick button to keep the changes.

Click on the cross button to remove the colour.

Click on the X in the top right to return to the colour setting which was used when you first opened the colour window.

Change colour outside ruler



In the above window, clicking on a coloured button will change the colour of the area outside of the ruler.

Click on the >> button to choose from more colours.

Adjusting the slider on the right hand side will increase/decrease the density of the colour.

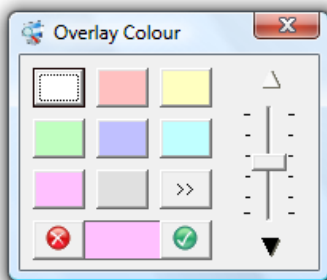
Click on the tick button to keep the changes.

Click on the cross button to remove the colour.

Click on the X in the top right to return to the colour setting which was used when you first opened the colour window.

When in full screen overlay mode, this button lets you change the overlay colour.

Change overlay colour



In the above window, clicking on a coloured button will change the colour of the full screen overlay.

Adjusting the slider on the right hand side will increase/decrease the density of the colour.

Click on the >> button to choose from more colours.

Click on the tick button to keep the changes.

Click on the cross button to remove the colour.

Click on the X in the top right to return to the colour setting which was used when you first opened the colour window.

Ruler Size



These buttons allow you to increase and decrease the ruler size.

Mouse Colours



Clicking on the mouse pointer button will cycle through the available mouse pointer colours, changing the colour of the mouse pointer used as it goes.

Screen Markers

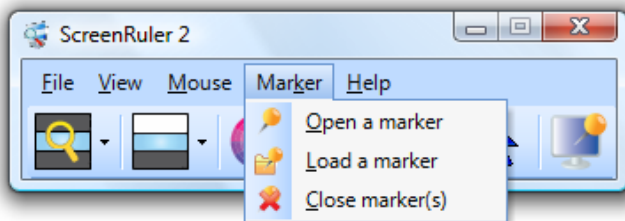
Screen markers can be used to highlight areas of the computer screen as you work.



Clicking on the screen marker button will load the default marker shape:



There are more screen marker options in the file menu:



Load a marker

This option will give you a choice of marker shapes to use, you can also load your own .png files. If at any time you want to shape the shape again, right click on the marker and select 'Load'. Here are some examples of the type of marker you can use:



Close marker(s)

This option will close all of the open screen markers. If you only want to close one particular marker, right click on the marker and select 'Exit'.

Support and Contact

Visit www.clarosoftware.com

Alternatively email us at support@clarosoftware.com

Many thanks for using ScreenRuler.

ScreenRuler (XP Edition)

If you would like to use ScreenRuler XP Edition, please do the following:

- Locate C:\Program Files\Claro Software\ScreenRuler\ScreenRuler1\ScreenRuler.exe
- Right click on ScreenRuler.exe and select "Send to:" > "Desktop (create shortcut)"

You now have a quick link to ScreenRuler XP Edition on your desktop.